



Your word is a lamp to my feet and a light for my path. Psalm 119:105

Harbour Lights

THE NEWSLETTER OF NEWHAVEN CHURCH OF SCOTLAND

S U M M E R 2 0 1 3

SPECIAL POINTS OF INTEREST

- Youth and Children's Worker
- The Guild
- Brownies
- Growth Groups
- Elders' Districts
- A letter from '121' ...

PRAYER FOCUS

*Prayer
is the oxygen
of the soul*

- St Padre Pio

Light of the World

Dear Friends,

I am writing this on a gloriously sunny day and hoping that summer has finally arrived and may actually take hold. I have noticed that when the sun shines and it's warm outside people seem happier. There's an increased sense of well-being and everything looks brighter. Jesus calls us to be the light of the world, to let our light shine to all those around us. I like to think of this in terms of what I've described about the weather, that we are called to bring sunshine into people's lives, that we are called to be a gift to others, that the love of God is worth sharing with those around us. It's an image of simple goodness and it makes a difference in people's lives, and the wonderful thing about it is the fact that all of us are able to be bearers of such light and goodness.

With this in mind I hope and pray that you may have a wonderful summer, one filled with much light and goodness.

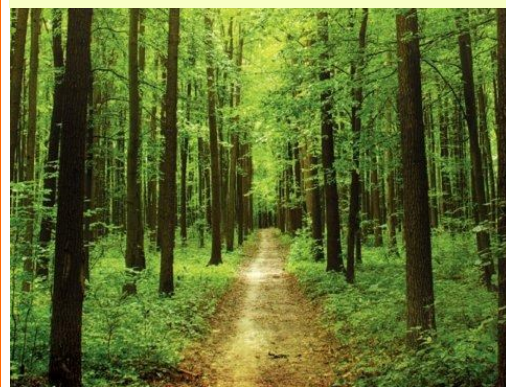
Much love,

Peter



*You are the light of the world. ...
let your light shine before others,
that they may see your good deeds
and glorify your Father in heaven.*

Matthew 5:14-16



A New Arrival!



Audrey Gardiner and
her grand-daughter Ella

Bethany Appeal

We need FURNITURE – please donate!

We are running very low on essential furniture items and white goods to pass on to homeless people seeking to resettle in their own tenancies. If you have any good quality items you can donate to help people at a key stage in their battle to overcome homelessness please do get in touch as soon as you can.

We are looking for all :

***beds and mattresses *sofas *suites
white goods chests of drawers**

**Items must meet 1988 fire safety regulations*

To arrange an uplift, please call our FREE uplift service on **0131 561 8904**.

Youth and Children's Worker

**O Lord,
make me an
instrument of your
peace!
Where there is hatred,
let me sow love;
where there is injury,
pardon;
where there is discord,
harmony;
where there is doubt,
faith;
where there is despair,
hope;
where there is
darkness,
light;
where there is sadness,
joy.**

Meditation

Prayer of St Francis of
Assisi

**O Divine Master,
grant that I may not
so much seek to be
consoled as to
console;
to be understood as
to understand;
to be loved as to love.**

**For it is in giving
that we receive;
it is in pardoning
that we are pardoned;
and it is in dying
that we are born to
Eternal Life.**

Amen

The Kirk Session have approved taking this project forward and it is our aim to appoint a Youth and Children's Worker in time for the next session. This will involve a commitment from us all to support the new appointment. There are obviously financial implications and we are glad to say that sufficient promises of funding and underwriting have been obtained to give us confidence that the project is sustainable. However we are sure that the congregation will want to own it and we will be asking for financial support. Some people have agreed to underwrite part of the costs as well as making generous donations so we can have confidence in going forward to make an appointment. However the more that are involved the better so that the load is spread over as many of us as are able. The initial appointment is likely to be for three years and so pledges of financial support for the next three years would be appreciated. However that may not suit you and one-off gifts will also be gratefully received.

A Youth and Children's Worker does not mean that those who are currently doing this valuable work can simply retire! In fact, in our experience it is likely to mean that there are more things needing done as the work progresses. We need also to commit ourselves to both continuing to help and also to be available for any new ventures.

A key element for any worker is to have the prayer backing of both a support group and the congregation as a whole. It can be a difficult task coming into a new congregation and having the responsibility for developing the work. The worker will no doubt need support and also people with whom to sound-off ideas. Obviously this depends a lot on who is appointed because the support group needs to be folk with whom the worker will get along.

As can be seen, the appointment is not a cue to opt out – no, it is definitely an invitation to opt in. Can we count on you?

John Hodge, Convener, Mission and Outreach Group

The Guild

Our Guild "Monday Afternoon Meetings" trial has been reviewed recently and the majority of members agree that it has been successful and wish it to continue.

Most of our Guild syllabus runs through the winter months with shorter daylight hours and the afternoon meeting time has been welcomed. It has been noted that younger members of our church family might find the afternoon meetings difficult to fit into their lives and the Guild appreciates this. We have not had any new responses over the past few years to our invitations to our previous Tuesday Evening meetings and to ensure the continuation of our present Guild at Newhaven Church we feel that we should respect the majority decision of our members and continue with the Monday Afternoon meetings.

It would be great to see the vacant Tuesday Evening being taken up by (dare I say "younger"?) people in our Church family interested in forming a group perhaps more suited to their busy lives. The Guild looks forward to new developments!

Louisa McKenzie, Convener



♦ Stop Press!

Newhaven Guild has raised £520 this year for the Julius Project -
No room for Homelessness. Well done everyone concerned!

Brownies

A new Brownie unit for girls aged 7 – 10 years will be opening on Thursday evenings at Newhaven Church from August 2013.

Brownies

Brownies meet on a weekly basis and participate in a wide variety of activities to interest, inspire, educate and challenge them. They have fun, try lots of new activities, make friends and have the opportunity to participate in fundraising and residential events. Brownies can develop new skills in areas such as outdoor activities, community service, personal development and teamwork as well as many practical skills such as first aid, road safety and life skills.

We are holding 3 different taster sessions for any girls interested in joining Brownies who will be aged 7-9 years by August 2013 on the following dates:

Thursday 06th June 2013	6pm – 7.30pm
Thursday 13th June 2013	6pm – 7.30pm
Thursday 20th June 2013	6pm – 7.30pm

Please email: Newhavenbrownies@outlook.com for more information, if you would like to register your daughter for the taster sessions.



If you can't make it to the taster sessions but would like to register for a place in the unit in August, please visit: www.girlguiding.org.uk/get_involved/register_your_interest.aspx

Growth Groups

A date for your diaries, on Monday 10th June, 2013 there will be a Growth Group get together at 7.30pm in the Church Hall. This is for those who are already in a group and also for those who are interested in joining a group.

The evening will be a time of worship, fellowship and discussion, sharing with one another how being part of a group has helped them on their faith journey and, for those interested in joining a group, some insight into what being part of a growth group is all about - and of course there will be the usual light refreshments.

The Education Group look forward to seeing you.

Jeanette Meek, Convener, Education Group

Elders' Districts

As was mentioned at the Church Annual Stated Meeting in March - and following the review of the Church Roll in 2012, and the retirement from Session of four Elders - the Kirk Session has re-organised the Elders' Districts into 12 new Districts, plus a Postal and a Pastoral District.

Members are being re-grouped, as best as possible, according to geographical area within the Parish and further afield. Some members will continue to have the same Elder as before, some will not.

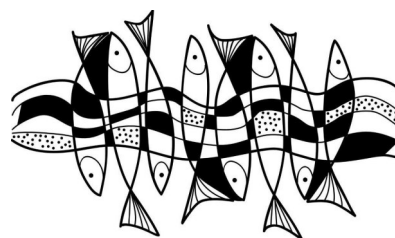
The Elders will be visiting everyone on their new lists over the next few weeks. This initial contact will allow them to introduce themselves to you, update/swap contact details, and assess if you wish further visits and how frequently. If you prefer particular times of the day, or to meet somewhere other than in your home then that's OK - let your Elder know. Also, if you prefer not to have formal visits but for your Elder to keep in touch informally then that's OK too - this is the opportunity to let them know that.

In addition, a new *Amendments and Updates* form will be available in the Church foyer for any changes/updates relating to yourself or other members. We have only a few phone numbers for members of the congregation, and even fewer email addresses so please consider whether you can give your Elder these details, to make contacting you easier.

The Kirk Session is very aware of the importance for some members of their relationship with their Elder, both to provide a formal link to the leadership of the Church but also because of the pastoral support that the relationship provides. We know that in some cases these relationships go back many years and so the re-organisation has not been undertaken lightly.

I ask that members welcome their Elder as they make their visits over the next few weeks, whether or not they wish to continue to have formal visits, and support them in this pastoral work they undertake.

Colin MacNeill, Session Clerk



Ministries and Mission 2013

The Session Clerk recently received the following letter from Rev Alan W Gibson, Head of Stewardship, Church of Scotland:

Dear brothers and sisters in Christ,

I write to thank you most sincerely for supporting the worship, mission and service of the Church through the money you give in your offerings. It is important that you should know what happens to this money and this letter intends to explain how your congregation's Ministries and Mission Contribution will be used to enable the work of the Church of Scotland in 2013.

Edinburgh: Newhaven

Total Contribution to Ministries and Mission for 2013 - £56,017
which will be used in the following ways:

♦ Ministries (86%)

£48,175 of the total contribution will go towards the costs of providing over 1,000 ministers and other parish workers in communities throughout Scotland and in the Presbytery of England. This contribution also assists with the costs of recruitment and training.

♦ Mission (14%)

£7,842 of the total contribution will be used to support the Church's work in: resourcing congregations for Christian education and outreach; providing social care services in Christ's name to further the caring work of the Church to people in need; accompanying partners around the world on our shared Christian journey; contributing the Church's opinion in public debate and on issues affecting Scotland and the World; providing central day-to-day service work in administrative, financial and legal matters; and in planning the General Assembly and ensuring the Moderator represents the Church.

As you will see, the contributions your church makes ensure a very diverse ministry is maintained and that the Gospel of Jesus Christ is shared in many ways and in many places. . . .



**Committed to Serving Christ,
each other,
and the Community**

Newhaven Church of Scotland
7 Craighall Road
Edinburgh EH6 4ND
Phone: 0131 476 5212 (Minister)
Email: enquiries@n-c.org.uk
Website: www.n-c.org.uk
Charity No. SC019117

Editor:

Elaine Greig editor@n-c.org.uk

Newhaven Church Roll

The Church Roll is more than just a list of members - it is a means of identifying those who have professed their faith in Christ and who are part of his Church at Newhaven. It is also a vital means of communication.

For this reason, it is important that the Church Roll is kept as accurate as possible.

Please notify the Roll-Keeper (Elaine Greig), or your Elder, of any changes/updates relating to yourself or other members.

If you would like more information on what 'membership' means and involves, please speak to Peter or Colin MacNeill.

Leith Churches Holiday Club



Please pray for all those involved with the preparation, organisation and leading of the Holiday Club from 15-19th July (10-12.15 daily) in South Leith Church Halls. Give thanks for the opportunity to tell the children - many of whom have no church contact - about God's love for them. Pray that good relationships may be built with all the families during the week. For more

information, see www.lchc.yolasite.com or email: leithhc@gmail.com

Come and join us!

Every Sunday at 10.30am

2nd and last Sundays of each month at 7pm

The next **Harbour Lights** will be the Harvest issue, covering September, October and November [copy deadline Sunday 11th August].

Please speak to the Editor, Elaine Greig, or email her at editor@n-c.org.uk if you would like anything included in the next issue.